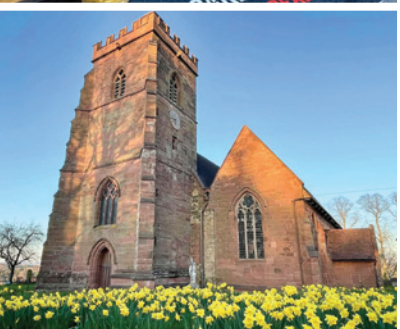




VISIT KINVER



Getting Here

From the A449 (Worcester direction), continue through Kidderminster town, and past the turnings for Cookley village. Take the second turning on the left after the Manor at Whittington Pub (1.2 miles) and continue along Dunsley Road into Kinver.

From the A449 (Wolverhampton direction), continue past Wall Heath village, towards Kidderminster. Turn right at the traffic lights onto the A458 Bridgnorth Road. Take the second left onto Hyde Lane and continue to the end. Turn left along Enville Road, and continue until the road changes into High Street, Kinver.

DY7 6HD, What 3 Words:
headline.caves.blotting



KINVER TANDOORI

FLAVOURS OF INDIA
Est. 1984

Each dish is a fusion of tradition and innovation, promising a memorable dining experience.

01384 877 448 • kinvertandoori.co.uk
50 High Street, Kinver DY7 6HE



Dine in our relaxing village restaurant and enjoy fine cuisine made from fresh, local ingredients. We also have a wide selection of wines and guest ales in our well-stocked bar.

01384 878 888
baytreekinver.co.uk
116 High Street, Kinver DY7 6HL



Thank you to our contributors; Photos by Dave McGirr, Andy Clee Photography, Steve Sant Photography and Sue Drinkwater, historical insights by Edmund Simons and design services by Kinver Design and Marketing Ltd. Thank you also to the Ken Wrigley Memorial Charity (Registered Charity No. 1208157) for their sponsorship.

Issue: 01/2025. Whilst we try to ensure that the information contained within this leaflet is correct and up-to-date, we cannot guarantee the accuracy. Kinver Parish Council and all those associated with this publication do not accept any liability for any inaccuracies.

Welcome to Kinver

Welcome to the historic village of Kinver, located in the South Staffordshire countryside, on the county borders of Shropshire, Worcestershire and the West Midlands.

Whether you're visiting for a few hours, or planning a longer stay, Kinver has an array of artisan shops, walks and activities to draw you in. If you're feeling a bit peckish, there is a good selection of cosy cafes, and restaurants, serving delicious local produce. Or perhaps you'd prefer a real ale in one of Kinver's many pubs. There is certainly something for everyone in this delightful idyllic village!



Photo: Dave McGirr

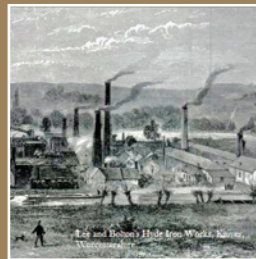
History

Kinver is an ancient place, its name in Welsh 'Cyn-Fawr' meaning Great Ridge or Royal Ridge. The parish has many historic sites ranging from scatters of flints left by Ice Age hunters, Prehistoric burial mounds, the Bronze Age hillfort, to huge Roman forts, and a settlement at Greensforge.

The village itself is a planned medieval town. It was laid out on the banks of the River Stour in the 13th century, with a wide high street, market hall (where the modern timber clock tower stands today), and timber-framed houses lining each side. Many of these medieval and later Tudor houses survive, some with later brick fronts. Try looking for timber frames on gables or at the rear of houses and you can see how much of the medieval town remains. Above sits the Grade I listed church of Saint Peter with fine medieval architecture and monuments.

Kinver only started being called a village in the 19th century, when its ancient borough status was removed.

Kinver's importance lay in it being the chief town of a royal forest. This wasn't a forest in the modern sense (i.e. woodland) but was a place where royal law held sway and the personal property of the king with his house at Stourton Castle. Parts of the heathland that made up the 'forest' survive on Kinver Edge and in patches throughout the parish.



By the 17th century, the powerful local Foley family had introduced ironworking to the area, using the water of the fast-flowing River Stour to power the bellows and hammers of a number of iron mills. The remains of these can be found along the river and canal which follows part of its route. There are a number of notice boards along the route that give further information.



Hill Fort. Photo: Local photographer, Andy Clee

History continued...

The parish was not immune from the upheavals of the Civil War with a siege at Stourton Castle and a massacre by the locals of Scottish troops in 1651 when the defeated Charles II found himself lost on Kinver Edge on his flight from the Battle of Worcester.

The most remarkable sites in the parish are the rock-cut buildings (they are not natural caves). Recent work has shown that some of these were created up to a thousand years ago, and some were occupied into the 20th century. Kinver has the highest concentration of domestic rock-cut buildings in the UK and the National Trust sites at Holy Austin Rock are the only ones in the country open to the public. Word has it that these incredible dwellings were an inspiration for Tolkien's hobbit houses, having visited the parish in his youth.

By the 20th century, Kinver became a place for day trips from the nearby conurbations. Visitors would enjoy beer from the many pubs, visit the tea gardens at the foot of the Edge, and climb the hill before returning home on a tram.

Kinver had ceased to be a town but remained (and remains) an important location on the boundaries of Worcestershire and Shropshire, between the towns of the Black Country and the rural landscape of the Welsh borders. With a unique and strange history of kings, troglodytes, hobbits, tea gardens, and local legends, Kinver remains an interesting place to visit.



Photo: Local photographer, Steve Sant

Walks

Discover the hidden gems of Kinver and embark on a journey along the enchanting footpaths.

Why not challenge yourself to the Blue Plaque Walk through the village? A variety of circular walk leaflets are available for purchase at Kinver Community Library, or download your copies via visitkinver.com/walks

Don't forget the dog!

Kinver is a dog friendly destination. As well as miles of nose tingling walkies, you can enjoy a well deserved drink together and a bite to eat in our local pubs and cafes.



Photo: Sue Drinkwater

Photo: Dave McGirr

Things to do

National Trust's Kinver Edge and the Rock Houses

With sweeping views, a wildlife haven and unique homes carved straight into the rock, Kinver Edge is full of surprises. The famous Holy Austin Rock Houses are restored to help you soak up the atmosphere of these unusual homes. Get comfortable by the fire and listen to tales of the people that lived right inside the rock.

Just outside is the heathland of Kinver Edge - a pocket of wilderness, buzzing with insects and heady with the scent of gorse and purple heather.

A stroll along the sandstone ridge offers dramatic views across the surrounding counties, and footpaths invite you to explore all that the area has to offer.



More local attractions:

- Kinver Miniature Railway kinver-miniature-railway.co.uk
- Drakelow Tunnels drakelowtunnels.co.uk
- Kinver Canal and Locks
- Kinver Maize Maze & Fruit Picking (check available dates) kinvermaizemaze.co.uk
- River Severn Canoes (check available dates) riverseverncanoes.co.uk



For an up-to-date calendar of events and clubs, please visit: visitkinver.com



Further afield

Make Kinver your perfect long stay for access to a wide variety of activities and days out nearby.

- | | |
|--|---|
| Bodenham Arboretum (3.6 miles) | Halfpenny Green Wine Estate & Craft Village, Bobbington (7 miles) |
| Mini Pro Golf Parks, Wolverley (3.8 miles) | Wild Zoological Park, Bobbington (7 miles) |
| Stourbridge Glass Museum (3.9 miles) | Arley Arboretum & Gardens (7 miles) |
| Enville Golf Club (4.2 miles) | West Midlands Safari Park, Bewdley (7.5 miles) |
| Full Throttle Raceway, Stourbridge (4.5 miles) | Harvington Hall (7.6 miles) |
| Courtyard Escapes, Stourbridge (4.9 miles) | Bewdley Museum (8.6 miles) |
| The Falconry Centre, Hagley (5 miles) | Dudmaston Hall, Bridgnorth (8.6 miles) |
| Severn Valley Alpacas, Bridgnorth (5 miles) | Dudley Castle (9.4 miles) |
| Wolverhampton Airport, Bobbington (5.7 miles) | Dudley Zoo (9.4 miles) |
| Kidderminster Escape Rooms (5.8 miles) | Whitlenghe Gardens, Hartlebury (9.5 miles) |
| Severn Valley Railway, Kidderminster (5.9 miles) | Black Country Museum, Dudley (10.2 miles) |
| The Museum of Carpet, Kidderminster (6 miles) | Go Ape, Wyre Forest (11.3 miles) |
| Himley Hall (6.7 miles) | Bridgnorth Castle and Grounds (12 miles) |

Accommodation

Dunsley Hall Hotel, Kinver
dunsleyhallhotel.co.uk 01384 877 077

Little Brook Lodge, Kinver
littlebrooklodge@gmail.com

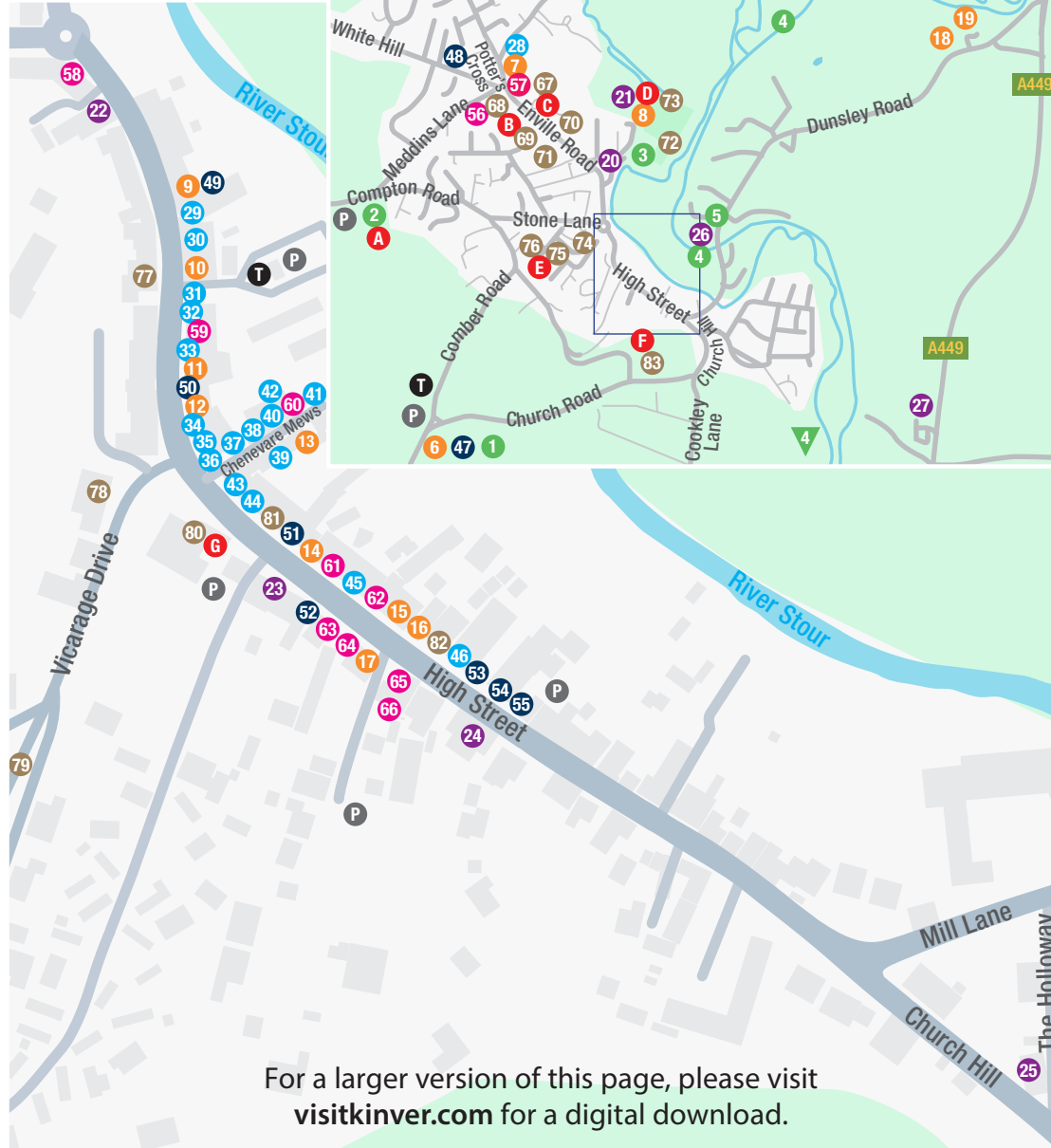
Kinver Edge View Annexe 07939 337 185

The Hyde Dovecote, Kinver 07966 138 005

The Fox Inn, Stourton (1.8 miles)
foxinn-stourton.co.uk 01384 872 614

See visitkinver.com for more places to stay.

Business Directory



For a larger version of this page, please visit visitkinver.com for a digital download.

Defibrillator Points:

- A** Holy Austin Rock Houses (National Trust), **B** Kinver Methodist Church, **C** Kinver High School,
- D** The Edward Marsh Centre, **E** Foley Infant School, **F** St Peter's Church, **G** Moss Grove Surgery

P Parking

T Toilet

Attractions & Activities

1. Kinver Edge Farm Shop & Maize Maze
2. National Trust Kinver Edge & the Rock Houses
3. Kinver Miniature Railway
4. Canal Locks - 3 in total (Hyde, Vine, Whittington)
5. River Severn Canoes (check available dates)

Cafes & Restaurants

6. Kinver Edge Farm Shop & Country Cafe
7. Lotus House Takeaway
8. Edward Marsh Centre Community Cafe
9. Kinver Deli & Cafe
10. Kinver Tandoori
11. Baci Ristorante Italiano
12. The Olde House Tearooms
13. Cafe No.5
14. Olga Dunn's Cafe
15. Mr Chips
16. Oriental Express Takeaway
17. The Bay Tree Restaurant
18. Harley's Smokehouse & Madhatter's Cafe
19. Dunsley Hall Hotel



Pubs & Social Clubs

20. The Royal Exchange
21. Edward Marsh Centre (Events Hall & Hire)
22. The Plough & Harrow
23. Ye Olde White Harte
24. Kinver Constitutional Club

25. The Cross Inn

26. The Vine

27. Manor House of Whittington



Shops & Artisans

28. Severn Edge Vets
29. Country Kate Gift Shop
30. Kinver Opticians
31. Wombourne Funeral Services
32. Mary Steven's Shop
33. Royal British Legion
34. Winnie & Olive, Flowers & Gifts
35. FM Branding
36. Kinver Travel Centre
37. Daniel James Photography
38. Elephants Pyjamas
39. Kinver Dog Parlour
40. Kinver Jewellers
41. Shop
42. Beth Stone Tattoos
43. Fable & Willow Interiors
44. Connie's Pet Store
45. Crafts by Eleanor
46. Eden Midcalf Estate Agents

Food & Drink Shops

47. Kinver Edge Farm Shop
48. Potters Cross Post Office & Store
49. Kinver Deli & Cafe
50. The Olde House Confectioners
51. Kings Fayre Bakery
52. Vino Off-license
53. Hartland's Master Butchers
54. Hartland's Master Grocers

55. Your Co-op Food & Post Office

Hair & Beauty

56. Kinver Beauty Clinic
57. ToppCutz Hair Design
58. Serenity Hair
59. Rua Salons
60. Joli Jarvis Hair Studio
61. Fabulous Kurdish Barbers
62. Kinver Barbers
63. Blush Beauty
64. Hers & Sirs Hair Salon
65. Francesca's Beauty Boutique
66. Hush Hair By Rachel



Public Services & Health

67. Brindley Heath Junior School
68. Kinver Methodist Church
69. Potters Cross Preschool Playgroup
70. Kinver High School (& Kinver Lettings)
71. Kinver Dental & Implant Surgery
72. Kinver Play Park
73. Skate Park & Pump Track
74. Kinver Garden Day Nursery
75. Kinver Fire Station
76. Foley Infant School
77. Kinver Parish Council
78. Kinver Community Library
79. St Peter's Church Hall
80. Moss Grove Surgery
81. Village Dental Practice
82. Bills Pharmacy
83. St Peter's Church